

YOUR IDEAS, REALIZED

Sheet Metal

OEM ODM OBM



台華精技股份有限公司
TAIWA PRECISE TECHNIQUE CO., LTD.

台灣板金設計製造
PRECISION CRAFTED METAL SOLUTIONS



台灣板金

Your Ideas , Realize

設計製造

ODM OEM OBM

嚴謹作業標準
通過ISO各項認證

Rigorous
Operating Standards
And Iso Certified.

整合工程
生產服務

Integration Engineering
Production Services.

產品整合服務
生產製造

Integration Services
Production Manufacturing.

我們將努力成為您們的關鍵伙伴
為您提供最完善的服務

We are dedicated to being your trusted partner,
providing you with the most comprehensive services.



在大家的努力下
台華精技 廠房四樓新建工程
於2024年度歲末完工



01

04-06

關於TAIWA TAIWA History

公司位置 TAIWA Location

02

07-11

台華重要記事 Important Milestones of TAIWA

組織圖 Organizational Chart

客戶分佈 Customer Distribution 廠房 Factories

03

12-15

服務項目 Main Equipment

主要設備 Services

製造流程 Manufacturing Process

外包供應商 TAIWA Suppliers

04

16-20

業務 Business

設計 Design

雷射 Laser

折床 Bending

焊接 Welding

加工 | QC檢驗 Machining, QC Inspection

05

21-24

產品領域 Product Areas

產品類 Product Categories

06

25

社會貢獻 Social Contributions

教育訓練 Education & Training

ISO認證 ISO certification

TAIWA History

關於TAIWA

台華經技 總經理
TAIWA General Manager

葉國禎



成立日期：2000年8月

廠房面積：1850坪

資本額：新台幣8000萬元

公司地址：台中市南屯區精科六路二號

土地面積：1550坪

員工人數：約90人

TAIWA創立於2000年,專注於精密板金的設計與製造，有著多年日本板金代工的經驗。除了有自己專屬的工程與工業設計團隊外，全場使用日本進口高精密度的AMADA設備，目前已是中部地區頗具規模板金加工製造商之一。

營運項目主要以精密機械板金、開發設計生產為主,從金屬板材進料開始，圍面繪製、雷射切割、NCT沖孔至攻牙植釘、折彎成型、及研磨、焊接組裝，到最後委外表面處理成品至客戶端，一貫化的生產作業與管理。

國內我們是許多設備廠的重要關鍵夥伴，國外客戶主要有來自日本、紐西蘭及澳洲，我們以積極跟努力拓展歐美市場。

秉持著品質優良、效率第一、服務滿意之目標，依客戶之需求 (OEM/ODM) 提供更多元的服務，全力滿足客戶。

主要領域為產業機械、光電產業、精密板金零件、各式外殼外罩、電氣控制箱、機械箱體外罩與骨架，近年逐漸拓展至5G設備相關、智慧自動化周邊、儲能設備、戶外休憩產品、公共空間設計家具等領域，以我們專業的技術與整合能力，搭配美學設計，打造板金精品，讓大家認同“板金的重要”與提升我們的價值。

永續經營、技術創新是我們公司努力的方向，從組織的優化開始，更專注於人才培育訓練與產學合作、團隊接班與年輕化，導入自動化、數位化工具等積極推動數位轉型，為迎接未來的各項挑戰做準備。



Establishment date: August 2000

Factory area: 1850 Ping

Capital: 80 million New Taiwan dollars

Number of employees: about 90 people

Land area: 1550 Ping

TAIWA, established in 2000, is dedicated to precision sheet metal design and manufacturing, with a wealth of experience in subcontracting for Japanese firms. Our team boasts its own skilled engineers and industrial designers, and we're equipped with the finest Japanese-imported AMADA machinery. Today, we stand as one of the prominent sheet metal processors in the central region.

Our operations cover a wide range of services, starting with precision mechanical sheet metal work, all the way to developmental design and production. Our workflow is comprehensive, beginning with the raw metal sheet and spanning various processes like layout planning, laser cutting, punching, tapping, bending, forming, grinding, welding, assembling, and finally, outsourcing the surface treatment to deliver the final product to our clients. This ensures a seamless production line managed with utmost precision.

We're a trusted partner for numerous domestic equipment manufacturers and have a growing international presence, especially in Japan, New Zealand and Australia, while we continue to expand into the European and American markets. Our commitment is to quality, efficiency, and customer satisfaction, offering a broad spectrum of services tailored to our clients' OEM/ODM requirements.

Our application expertise includes industrial machinery, optoelectronics, precision parts, casings, electrical control boxes, and mechanical enclosures. Recently, we've broadened our horizons to include 5G-related equipment, smart automation accessories, energy storage, outdoor leisure items, and designer furniture for public spaces.

We pride ourselves on blending our technical know-how with aesthetic design to produce exceptional sheet metal work that underscores its significance and adds value to our clients' projects.

We're also steadfast in our commitment to sustainable operations and continuous technological innovation. Our focus is on organizational optimization, nurturing talent through training and academic-industrial collaboration, team succession, and youth engagement. We're actively embracing automation and digitalization, which are all part of our strategic digital transformation, in order to gear up for the challenges of the future.

Our Location

公司位置



靠近台中機場
Close to Taichung Airport

約20分鐘
About 20 minutes

靠近桃園機場
Close to Tao Yuan Airport

約80分鐘
About 80 minutes



靠近台中港
Close to Taichung Seaport

約30分鐘
About 30 minutes



靠近高鐵台中站
Close to HSR Taichung

約10分鐘
About 10 minutes



靠近國道一號&三號
Close to National Highway
No1 & No3

約5分鐘
About 5 minutes



Important Milestones

台華重要記事



2000

台華精技成立於台中
Founded TAIWA

2002

日立ピアエンジニアリング株式会社
Contract Awarded By Japanese Company.

2005

榮獲日立ピアエンジニアリング株式会社
Awarded Commendation As An Excellent Supplier By Hitachi.

2006

參加日本機器設備商アマタ第18回優良板金製品競賽
榮獲頒『技能獎獎賞』
Won The Excellent Sheet Metal Manufacturer In Japan Contest.

2007

新廠動土
Planned Move To Taichung Precision Industrial Park.

2008

JANOME台灣 產業鈹金開發
Janome Taiwan Industrial Sheet Metal Development.

2009

推行ISO,ISO9001與ISO14001認證通過
Implemented Iso, Iso9001 & Iso14001 Certifications.
台中精密機械科技園區新廠落成典禮
Inauguration Ceremony Of Taichung Precision Machinery Technology Park.

2010

台弟工業新機型開發
Started Working With The Brother Group.

10週年



2011

最新AMADA雷射沖孔複合機C1投入生產
New Cutting & Punching Machine - Amada C1.

2012

申請行政院勞委會人力資源提升計畫開始辦訓
Joined The Executive Yuan Human Resources Improvement Training Plan Employee Training.

2014

通過TTQS評核為通過門檻級
Passed Threshold Level For Ttqs Assessment.

2015

光纖雷射沖孔複合機投入生產
Fiber Laser -Amada C1 AJ.

添購AMADA折床設備
Purchased Amada Bending Equipment.

2016

參加甘霖基金會園遊會、岱宇馬拉松
Joined Ganlin Social Welfare Foundation Fair And "Dyaco Taichung Marathon"

2017

員工人數達70位 70 Employees.

通過職安署中高齡職務再設計,改善人因工程
Passed Re-Design Of Middle & Senior Positions By Occupational Safety Ministry Of Labor To Improve Human Factor Engineering.

成立台華精技樂活隊提倡『樂在工作,樂在生活』
Set Up "Taiwan Lohas Team" Hope That Staff "When Work Is A Pleasure Life Is Joy"

聘請專業視障按摩師駐進,為同仁解疲勞
Hired A Professional Visually Impaired Masseur To Relieve Staff Fatigue.

台華二廠完工
Taiwa Second Factory Completed.

2018

導入自動化設備YASUKAWA機器手臂焊接
Imported Yasukawa Robotic Welder.

添購三次元檢驗設備
Introduced 3d Coordinate Measuring Machine.

成立足球隊
Established The Company Soccer Team.

通過TTQS評核持續辦訓
Passed The 2018 Ttqs Training Quality Standard Evaluation.

定期參加傑人盃馬拉松接力賽
Participated In The Dcs Road Running Relay Race.

2019

產品設計與美學能力提升
Product Design & Aesthetic Capabilities Enhancement.

獲選1111人力銀行幸福企業職場企業
Selected By 1111 Job Bank As A Happy Enterprise Workplace.

2020

成立行銷團隊 拓展國際貿易
Establishment Of A Marketing Team To Expand International Trade.

榮獲台中市『幸福職場』評選 三星獎
Awarded The "Happy Workplace" Three-Star Award By Taichung City.

榮獲TTQS評核『銅牌獎』
Received The "Bronze Award" In The TTQS Evaluation.

2021

導入 數位轉型計畫、資訊優化 圖紙電子化系統

Information optimization: Import information Protection System For Drawing Digitization.

第二十屆『中市金手獎-績優中小企業選拔表揚活動』榮獲為績優企業
Won 20th "taichung City Golden Hand Award" As Excellent Enterprise.

添購德國Siegmond焊接平台

Purchased German Siegmund Welding Platform.

添購AMADA 3000w雷射割管機

Purchased Amada 3000w Laser Pipe Cutting Machine.

參與 台電文創 變電箱計畫

Participated In The Taipower Cultural & Creative Transformation Box Project.

2022

【萬年曆_臺中車車站款(金屬板金)】榮獲TCOD 台中原創意生活類 獎項
"Perpetual Calendar Taichung Station Model (Metal Sheet Gold)"
Won the TCOD Taichung Original-Creative Lifestyle Award.

獲選 111年度 統一發票績優營業人

Selected Outstanding Business for Uniform Invoices in the 111th Fiscal Year"

導入 ISO45001

Obtained ISO45001 Certification.

通過SBIR 專案建置 戰情室/生產看板

We Established Digital Production Signage Through The Government Project Sbir Project.

2023

設計美學 大型多功能訓練架 for消防隊

Design Aesthetics: Large Multi-Functional Training Rack For Firefighters

公司廠房增建計畫、導入碳盤計畫、精實管理、ESG

Company Factory Expansion Plan, Carbon Accounting Project Introduction, Lean Management, Esg

電視架新產品上市

Independently Developed New Product: Pneumatic Lifting Tv Stand Honored To Be Shortlisted For Taiwan Excellence Award And Japan Good Design Award 2024

露營款DIY組合式雙功能烘豆 | 烤肉架】榮獲TCOD 台中原創-創意生活類 獎項
"Diy Combined Dual-Function Roasted Beans | Barbecue Grill"

This Product Won The 2023 TCOD Taichung Original-Creative Lifestyle Award

2024

持續系統整合與數位工具導入

Ongoing system integration and implementation of digital tools

強化生產排程 落實精實管理

Enhanced production scheduling and lean management practices

新產品開發、商業合作

New product development and business collaborations

增加4樓產線，產能大幅提升

Expansion of the 4F production line, significantly increasing capacity

設置無塵室空間

Establishment of a cleanroom facility

未完待續...

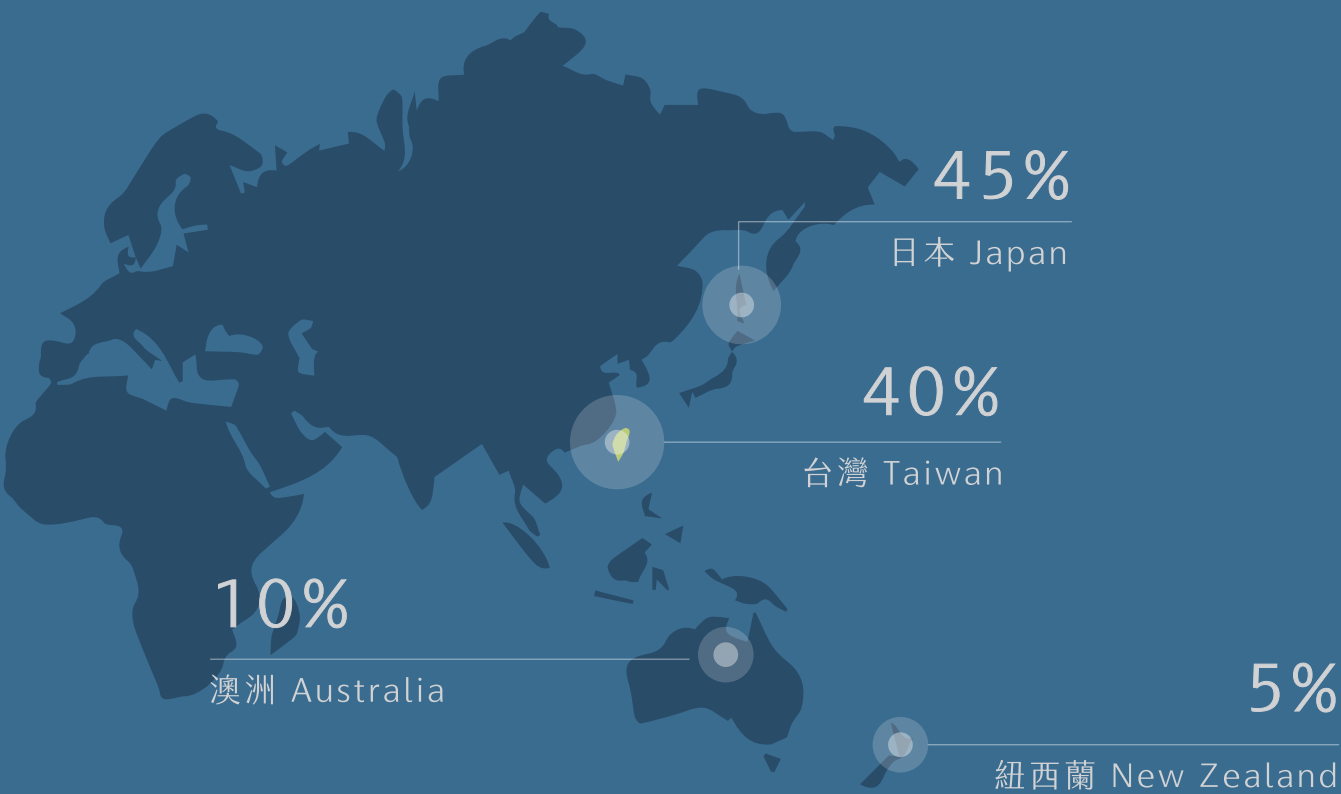
Organizational Chart

台華組織



Customer Distribution

客戶分佈



3

設計部
Design
Department

研發部
Research & Development

美學設計
Aesthetic Design

4

總務課
General Affairs

人資課
Human Resources

採購課
Purchasing

物管課
Property
Management

行銷課
Marketing

營業課
Business

製造部
Manufacturing
Department

雷射
Laser Cutting

折彎
NCT Bending

加工
Processing

焊接
Welding

5

品管部
Quality Control
Department

品保課
Quality Control

包裝課
Packaging

組立課
Assembly

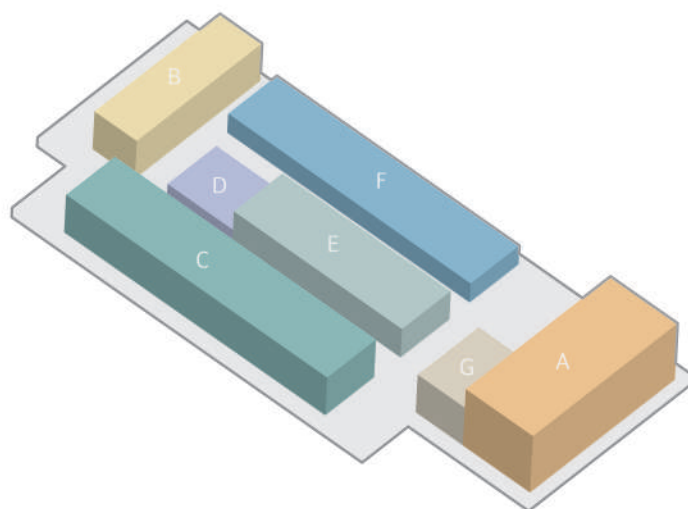
儲運課
Delivery



Factories

廠房

- A 行政辦公室
Administrative Office
- B 板材區
Sheet Metal Storage Zone
- C 雷射區
Laser Zone
- D 加工區
Macihining Zone
- E 折床區
Bending Zone
- F 焊接區
Welding Zone
- G 品管室
QC Inspections



Manufacturing Process | Services

製造流程 | 服務項目

- 設計 Design
- 雷射 Laser
- 抽牙 Burring
- 折彎 Bending
- 焊接 Welding
- 點焊 Spot Welding
- 滾圓 Rolling
- 拉絲 Drawing
- 車床 CNC
- 沖壓 Stamping
- 震動研磨 Vibration Finishing
- 研磨散打 Grinding Sanda
- 皿孔 Countersunk flat head screws
- 攻牙 Tapping Riveting Burring
- 擠壓螺帽（螺柱&螺絲） Squeeze Nuts
- 拉釘&拉帽 Rivet
- 植釘 Nailing
- 委外 Outsourcing
- 檢驗 Quality Control



設計

Design



雷射

Laser



加工

Machining



折彎

CNC Bending



焊接

Welding



委外

Outsourcing

檢驗
測試

QC Inspections

組立
包裝

Packaging



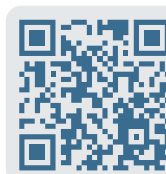
出貨

Shipping

Main Equipment

主要設備

N O	設備廠商	主要設備	數量	規格、型號
01	AMADA	3D CAD/CAM SOFT	2	AP100
02	AMADA	光纖雷射機	1	ENSIS 3015 RI
03	AMADA	雷沖複合加工機	2	LC2012C1NT
04	AMADA	AJ複合加工機	1	LC2515C1AJ
05	AMADA	HG 電腦折床	1	HG8025
06	AMADA	HDS 電腦折床	2	HDS8025、HDS1305
07	AMADA	HDS 電腦折床	2	FBD8025、FBD8020
08	AMADA	RG 折床	3	RG35、RG80
09	台製	自動攻牙機	4	—
10	台製	氣動懸臂攻牙機	1	—
11	台製	壓鉚機、鉚合機	2	—
12	台製	鑽床	4	—
13	台製	噴砂機	1	—
14	台製	油壓壓床	1	—
15	台製	沖床	2	—
16	台製	砂輪切斷機	1	—
17	台製	帶鋸機 圓鋸機	2	—
18	YASKAWA	焊接機械手臂	1	MA-2010
19	台製	氬焊機	11	—
20	台製	CO2熔接機	7	—
21	台製	點焊機	2	—
22	台製	直流變頻點焊機	1	—
23	台製	手持焊接機	2	—
24	AMADA	手持式雷射焊接機	1	—
25	台製	植(釘)焊機	2	—
26	台製	平台點焊機	1	—
27	台製	電焊機	1	—
28	德製	焊接工作台	2	系統22、系統28
29	台製	滾圓機	2	尺寸1300mm、600mm
30	台製	光纖雷射雕刻機	1	—
31	台製	三次元測量	1	—



TAIWA Outsourcing Supplier

模具加工
Mold Processing



- 彎管加工 Pipe Bending Processing
- 鍛造 Forging

加工
Machining



- CNC 機械零件加工
CNC Machining of Mechanical Parts
- 鋁Al、Cu、鐵Fe等各類精密零件加工
Precision Machining of Various Parts in
Aluminum , Copper , Iron , etc.

硬體
Hardware

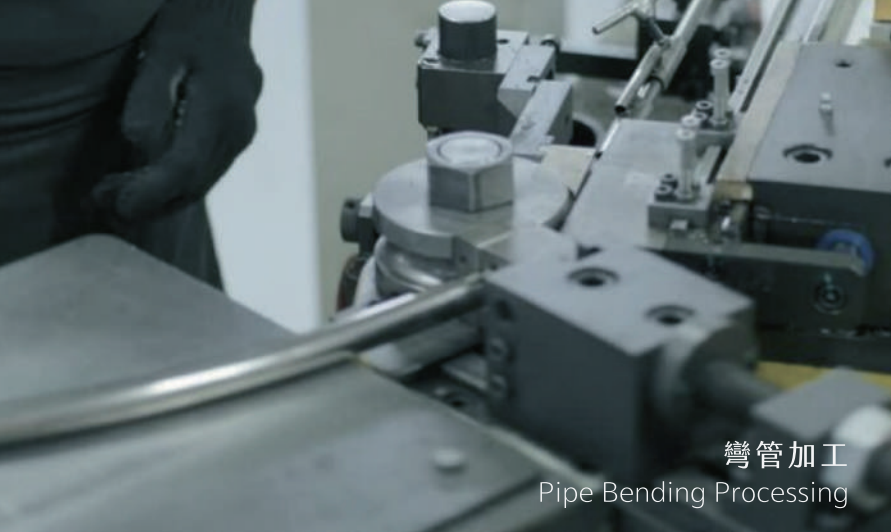


- 配電 Power Distribution
- 配盤組立 Assembly Distribution Panels

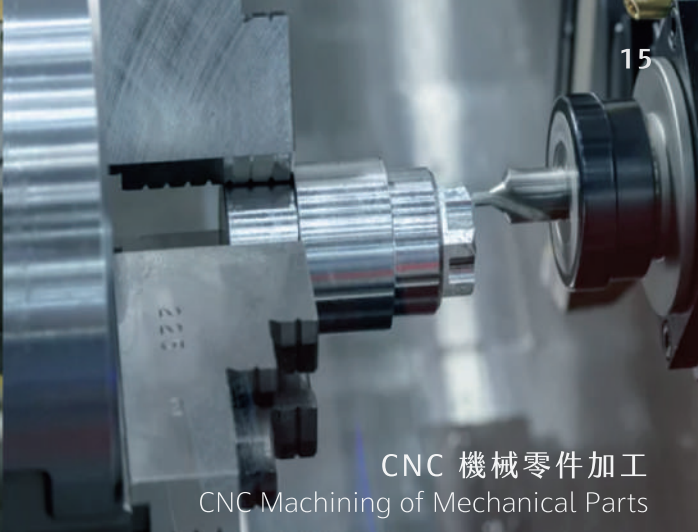
表面處理
Surface Treatment



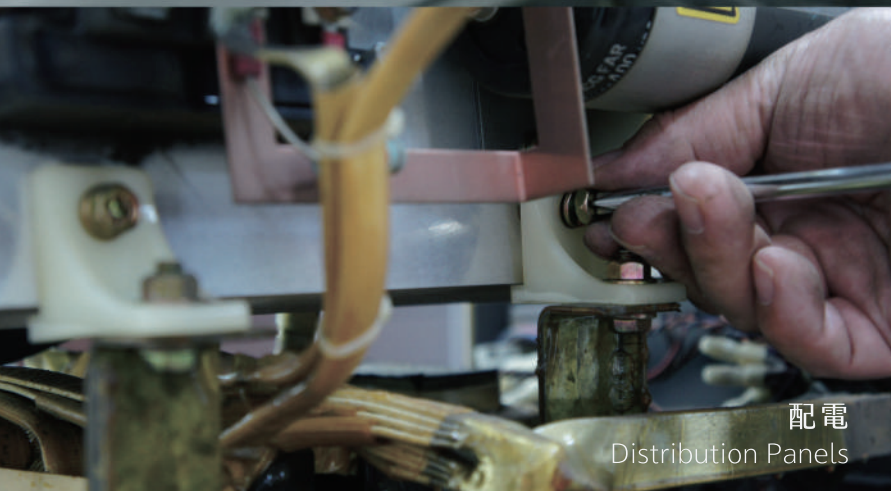
- 烤漆(粉體 | 液體) Painting
- 電鍍 | 電著 Electroplating | ED Coating
- 電解 Electrolysis
- 鈍化(食品級) Food-Grade Passivation
- 染黑 Black Oxide
- 陽極 Anodizing
- 雷射 Laser Engraving
- 印刷 Printing
- 噴砂 Sand Blasting
- 拋光 Polishing
- 熱處理 Heat Treatment



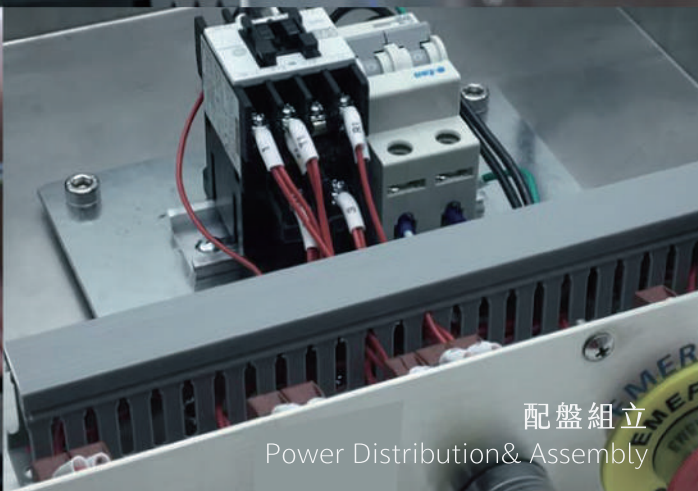
彎管加工
Pipe Bending Processing



CNC 機械零件加工
CNC Machining of Mechanical Parts



配電
Distribution Panels



配盤組立
Power Distribution & Assembly



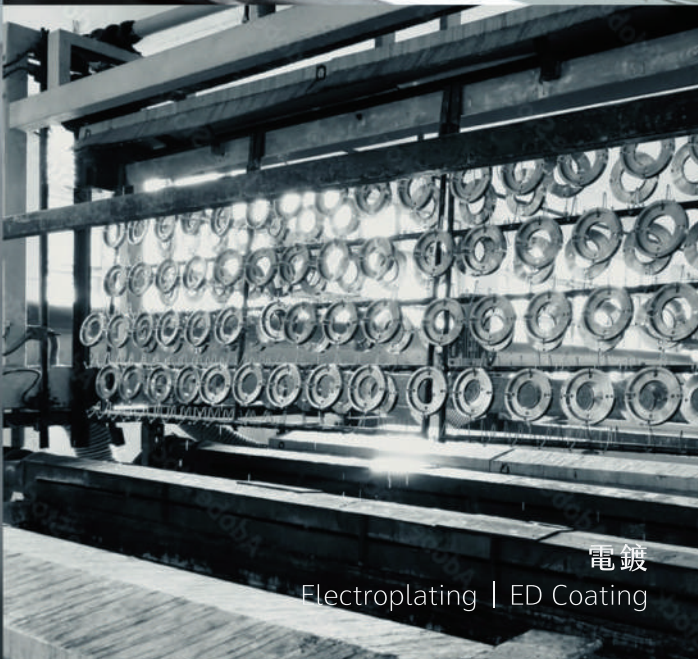
噴砂
Sand Blasting



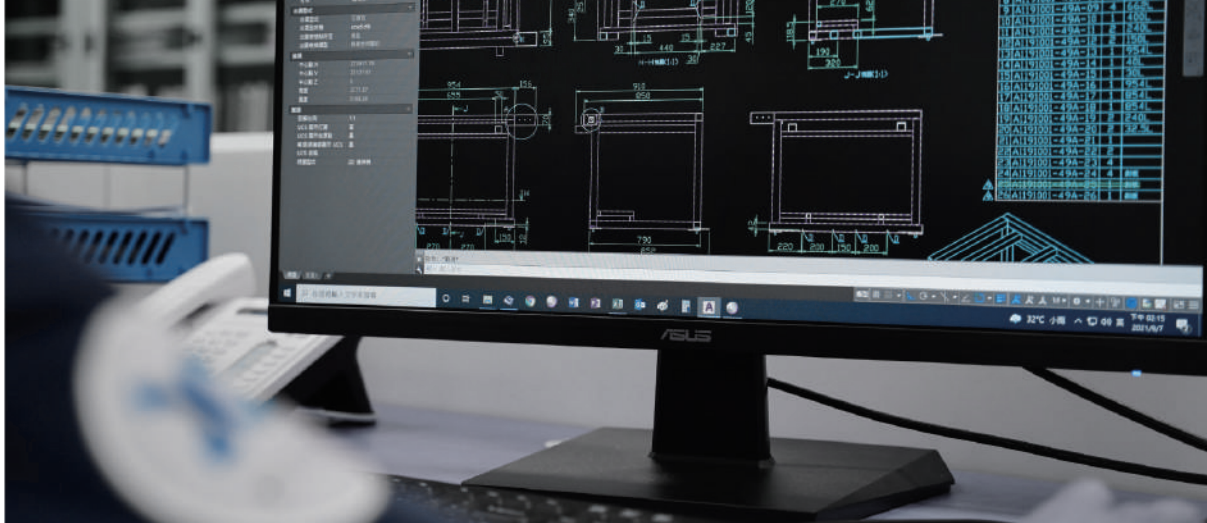
網版印刷
Printing



烤漆
Painting



電鍍
Electroplating | ED Coating



詢價、報價

Inquiry and
Quotation

- 各式板金加工
- CAD圖 | 3D檔 | 任何設計圖&實物
- 由業務專員與您聯繫報價

All Types of Sheet Metal Processing

CAD Drawings | 3D Files |
Any Design Blueprints & Physical Samples

Our Sales Team Will Connect With You to
Provide a Quote



訂單成立

Order Confirmation

- 報價、交期確認 無誤即可下單
- Once the Quote and Lead Times Are Verified,
You Can Proceed With the Order



ERP整合系統

ERP integrated
system

- 設計圖面與ERP軟體整合
- 提升作業速度並與資訊同步

Integration of Design Drawings With ERP
Software for

Increased Operational Speed and Information
Synchronization



設計

Design

- 依客戶客製化設計
- 2D CAD | 3D設計

Customized Design Solutions for Clients

2D CAD | 3D Design Services



工程設計

Engineering Design

- 引用日本AMADA專板金
- 立體編輯、自動展開及程式製作、有效提升設計品質、降低不良率

Utilizing Specialized Sheet Metal From Japan's
AMADA for Engineering Designs

Capabilities in 3D Editing, Automatic Unfolding,
and Programming to Enhance Design Quality
and Minimize Errors



排程、下料製作

Scheduling and Material Preparation



主要設備

Major Equipment

- 光纖雷射機
AMADA ENSIS 3015 RI
- 光纖複合加工機
AMADA LC2515C1AJ
- 複合加工機
AMADA LC1212C1NT
- 複合加工機
AMADA LC2012C1NT

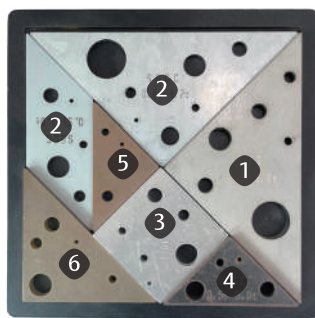


Laser

雷射

加工材質&厚度

Processing material & thickness



- | | |
|--|--|
| <p>① 不鏽鋼 Stainless
編號 304 316 430
表面 2B, HL, BA, ZA
T ≤ 12mm</p> | <p>④ 黑鐵 black iron plate
規格 SPCC/PO
T ≤ 19mm</p> |
| <p>② 鍍鋅 Galvanized
規格 SGCC/SECC
T ≤ 12mm</p> | <p>⑤ 紅銅 COPPER
T ≤ 6mm</p> |
| <p>③ 鋁 aluminum
規格 AL5052 6061 1050
T ≤ 10mm</p> | <p>⑥ 黃銅 BRASS
T ≤ 8mm</p> |
| | <p>⑦ 壓克力 Acrylics
T ≤ 6mm</p> |



全數採用複合機加工結合雷射、沖孔、攻牙、正面抽牙及孔導角 並使用光纖雷射快速加工薄厚板材、品質穩定

All Operations Utilize Multifunctional Machinery Combining Laser Cutting, Punching, Tapping, Front Drawing, and Hole Chamfering. Utilizes Fiber Lasers for Rapid Processing of Thin and Thick Materials, Ensuring Stable Quality

03



主要設備

Major Equipment

- 折床
AMADA HG 8025
- 電腦折床
AMADA HD 1303
- 電腦折床
AMADA HDS 8025



折彎板厚

Bending Thickness

不鏽鋼 Stainless
| 0.5mm - 10mm

鍍鋅 Galvanized
| 0.5mm - 3.2mm

鋁 aluminum
| 0.5mm - 6mm

黑鐵 black iron plate
| 0.5mm - 10mm

銅 CU
| 0.5mm - 5mm



折彎尺寸

Processing length

最大長度折彎 maximum length 2700mm

最大深度折彎 maximum depth 700mm

最大高度折彎 maximum height 280mm

折彎



加工類型

Welding type

TIG氬焊(鎢極氣體保護電弧銲接)
GTAW | Gas tungsten arc welding

植釘焊
Stud Welding

SPOT點焊
Spot Welding

CO2焊接(氣體遮護金屬電弧銲接)
GMAW | Gas Metal Arc Welding

雷射焊接
Laser welding

焊接機械手臂
Welding Robots



研磨
Grinding



滾圓
Rolling



切管
Pipe Cutting



Welding

焊接

05

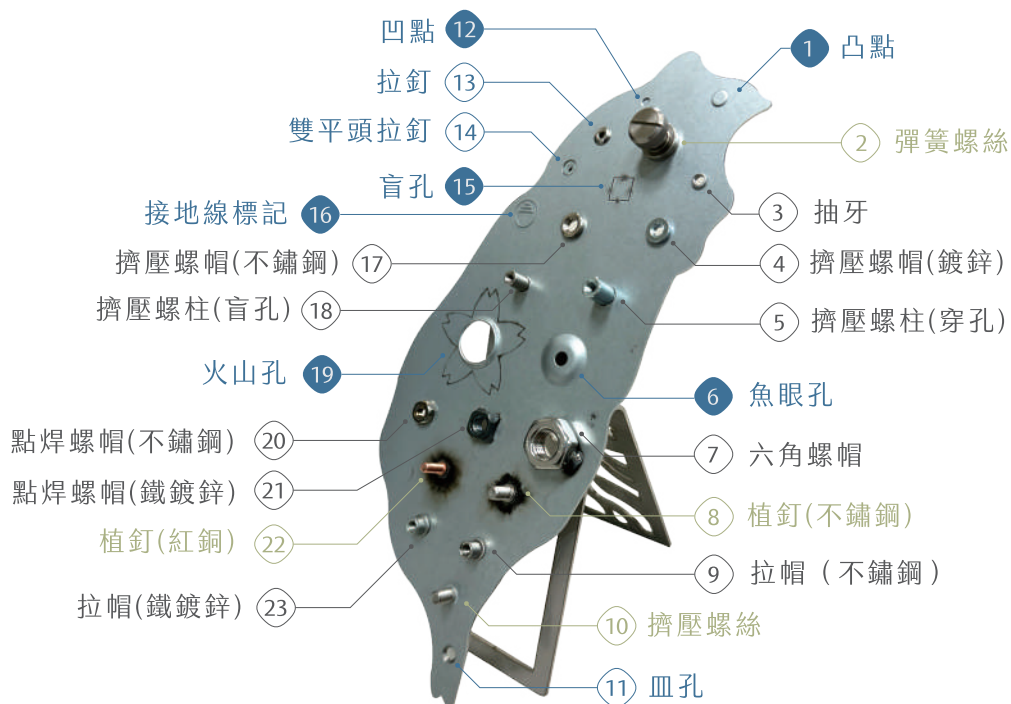
加工項目

Processing items

- 螺帽類
- 螺絲類
- 定位、沖壓孔類
- 其他



English Version
Please Scan The Qr Code



尺寸檢驗/測試

QC Inspections

嚴謹的品質把關及檢驗流程
A rigorous quality control and inspection process.



外觀檢驗/組立包裝

Packaging

類型 | 紙箱、木箱、棧板
保麗龍、氣泡袋、伸縮膜
客戶各式需求

Types include Cardboard Boxes, Wooden Crates, Pallets, Styrofoam, Bubble Wrap, Stretch Film.



出貨

Shipping

自有貨車 | 空運 | 海運

Shipping options include Company-Owned Trucks, Air Freight, and Sea Freight.

Professional Field

專業領域

板金外罩・零配件

Sheet Metal Parts and Case

安全圍籬

Industrial Safety Fence

精密電控箱

Electric control panel

無塵室潔淨設備

Clean room equipment

醫療設備・輔具

Medical devices

車用零組件

Automotive Parts

建築・室內裝修

Building

半導體設備

semiconductor equipment

公共空間・裝置藝術

Public Space
Installation Art

電子設備・骨架

Electronic equipment
framework

文創商品・客製

Ornament, Customization

5G綠能設備・儲電系統

5G green energy equipment
Energy storage system

咖啡周邊商品

Coffee accessories

生活用品・傢俱

Lifestyle products, Furniture

Product

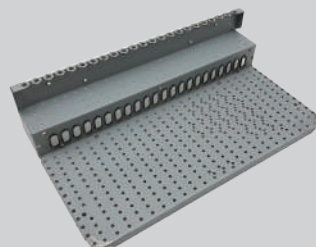
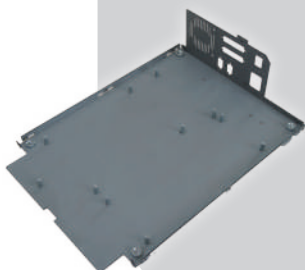
產品案例

SPCC



SECC

SGCC



Iron

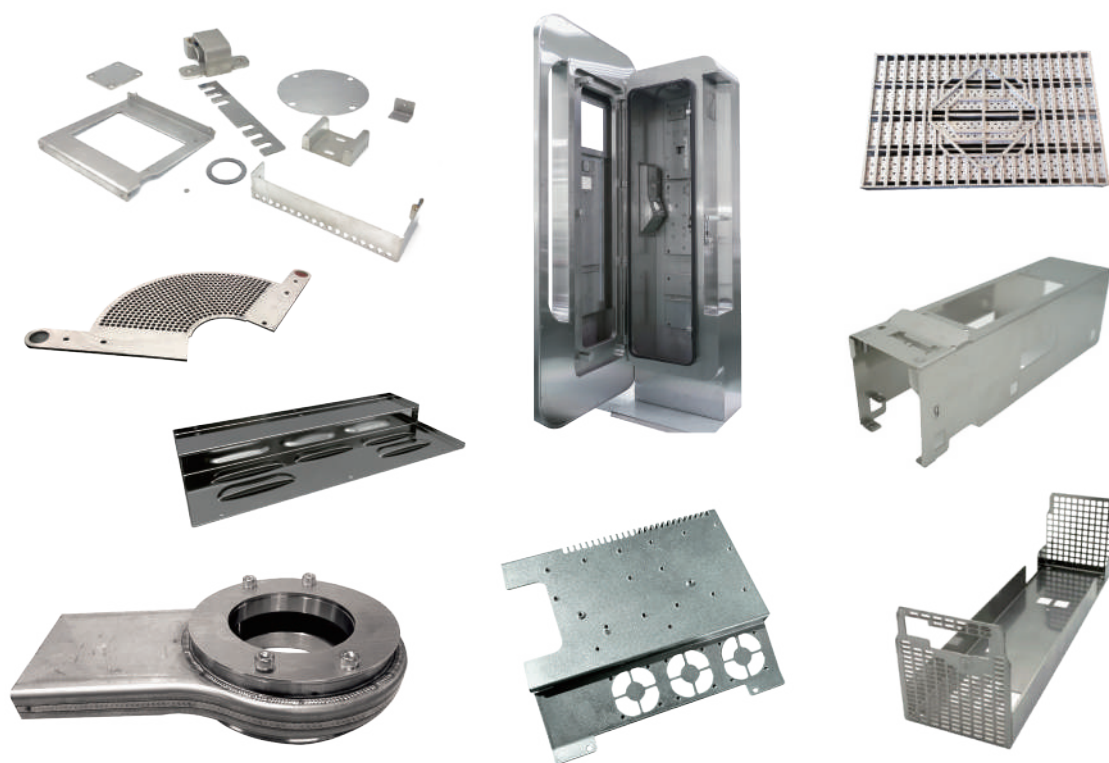
Tube



AL

CU





SUS



Ornament



Product

產品案例





社會貢獻
Social Responsibility



教育訓練
Educational Training



ISO 45001:2018
職業安全衛生管理系統證書



ISO 14001:2015
環境管理系統證書



ISO 9001:2015
品質管理系統證書



ISO認證
Iso Certification

販 売 代 理



台華精技官網



台華精技樂活隊

F. +886-4-2350-0999

T. +886-4-2350-5810

E-MAIL. sales@tai-wa.com.tw

408018 台中市南屯區精科六路2號
(台中市精密園機械科技創新園區)

